

PVC ventilation hose, medium-heavy

### Application

- flexible hose/ ducting for gases
- welding fume extraction
- extraction arm
- animal stall, animal shed: barn ventilation
- construction industry: tunnel ventilation
- bus, utility vehicle, caravan/ trailer, mobile home/ camper/ RV, boat, ship/ vessel/ marine, yacht: ventilation, heating

### Properties

- fabric reinforced

- medium-heavy duty
- highly flexible
- highly flexible + compressible 6:1
- good resistance to alkalis and acids
- flame-retardant wall according to: NF P 92-503 M2
- conforms to RoHS guideline

### Temperature Range

- 10°C to 80°C
- short time to 110°C

### Design

- PROTAPE® tape hose
- spring steel wire integrated in wall
- fabric-reinforced tape
- wall: PVC coated fabric
- wall thickness 0,25 mm approx.

### Delivery variants

- further diameters and lengths available on request
- grey (standard), black (standard)

I.D. (in / mm)	outer Ø (mm)	Pressure (bar)	Vacuum (bar)	Bending Radius (mm)	Weight (kg/m)	Production Lengths (m)	Order No.
<b>grey</b>							
2 / 50-51	52.60	0,265	0,160	30.60	0.13	5 6 10 15 20	371-0050-3400
2,36 / 60	61.80	0,220	0,120	36.00	0.17	5 6 10 15 20	371-0060-3400
- / 70	71.80	0,200	0,100	42.00	0.20	5 6 10 15 20	371-0070-3400
3 / 75-76	77.80	0,175	0,090	45.60	0.20	5 6 10 15 20	371-0075-3400
- / 80	81.80	0,165	0,090	48.00	0.23	5 6 10 15 20	371-0080-3400
3,5 / 89-90	91.80	0,150	0,075	54.00	0.00	5 6 10 15 20	371-0090-3400
4 / 100-102	103.80	0,130	0,055	61.20	0.29	5 6 10 15 20	371-0100-3400
- / 110	112.00	0,120	0,050	66.00	0.00	5 6 10 15 20	371-0110-3400
4,72 / 120	122.00	0,110	0,045	72.00	0.36	5 6 10 15 20	371-0120-3400
5 / 125-127	129.00	0,105	0,040	76.20	0.00	5 6 10 15 20	371-0125-3400
5,5 / 140	142.00	0,095	0,040	84.00	0.00	5 6 10 15 20	371-0140-3400
6 / 150-152	154.00	0,090	0,040	91.20	0.43	5 6 10 15 20	371-0150-3400
6,3 / 160	162.00	0,085	0,020	96.00	0.00	5 6 10 15 20	371-0160-3400
7 / 178-180	182.00	0,070	0,020	108.00	0.58	5 6 10 15 20	371-0180-3400
8 / 200-203	205.00	0,065	0,020	121.80	0.66	5 6 10 15 20	371-0200-3400
- / 250	252.00	0,050	0,015	150.00	0.83	5 6 10 15 20	371-250-3400
10 / 254	256.00	0,050	0,015	152.40	0.00	5 6 10 15 20	371-0254-3400
- / 300	302.20	0,045	0,010	180.00	0.99	5 6 10 15 20	371-0300-3400
12 / 305	307.20	0,045	0,010	183.00	0.00	5 6 10 15	371-0305-3400
- / 350	352.20	0,040	0,010	210.00	1.15	5 6 10 15	371-0350-3400
-	358.20	0,040	0,010	213.60	0.00	5 6 10 15	371-0356-3400
- / 400	402.20	0,035	0,005	240.00	1.32	5 6 10 15	371-0400-3400
16 / 405-406	408.40	0,035	0,005	243.60	0.00	5 6 10 15	371-0406-3400
- / 500	502.40	0,030	0,005	300.00	1.82	5 6 10	371-0500-3400
20 / 508	510.40	0,030	0,005	304.80	0.00	5 6 10	371-0508-3400
- / 600	602.40	0,020	0,005	360.00	3.80	5 6 10	371-0600-3400

I.D.	outer Ø	Pressure	Vacuum	Bending Radius	Weight	Production Lengths	Order No.
(in / mm)	(mm)	(bar)	(bar)	(mm)	(kg/m)	(m)	
<b>black</b>							
2 / 50-51	52.60	-	-	30.60	0.13	5 6 10 15 20	371-0050-3410
2,36 / 60	61.80	-	-	36.00	0.17	5 6 10 15 20	371-0060-3410
- / 70	71.80	-	-	42.00	0.20	5 6 10 15 20	371-0070-3410
3 / 75-76	77.80	-	-	45.60	0.00	5 6 10 15 20	371-0075-3410
- / 80	81.80	-	-	48.00	0.23	5 6 10 15 20	371-0080-3410
3,5 / 89-90	91.80	-	-	54.00	0.00	5 6 10 15 20	371-0090-3410
4 / 100-102	103.80	-	-	61.20	0.29	5 6 10 15 20	371-0100-3410
- / 110	112.00	-	-	66.00	0.00	5 6 10 15 20	371-0110-3410
4,72 / 120	122.00	-	-	72.00	0.36	5 6 10 15 20	371-0120-3410
5 / 125-127	129.00	-	-	76.20	0.00	5 6 10 15 20	371-0125-3410
5,5 / 140	142.00	-	-	84.00	0.00	5 6 10 15 20	371-0140-3410
6 / 150-152	154.00	-	-	91.20	0.43	5 6 10 15 20	371-0150-3410
6,3 / 160	162.00	-	-	96.00	0.00	5 6 10 15 20	371-0160-3410
7 / 178-180	182.00	-	-	108.00	0.58	5 6 10 15 20	371-0180-3410
8 / 200-203	205.00	-	-	121.80	0.66	5 6 10 15 20	371-0200-3410
- / 250	252.00	-	-	150.00	0.83	5 6 10 15 20	371-0250-3410
10 / 254	256.00	-	-	152.40	0.00	5 6 10 15 20	371-0254-3410
- / 300	302.20	-	-	180.00	0.99	5 6 10 15 20	371-0300-3410
12 / 305	307.20	-	-	183.00	0.00	5 6 10 15	371-0305-3410
- / 350	352.20	-	-	210.00	1.15	5 6 10 15	371-0350-3410
14 / 356	358.20	-	-	213.60	0.00	5 6 10 15	371-0356-3410
- / 400	402.20	-	-	240.00	1.32	5 6 10 15	371-0400-3410
16 / 405-406	408.40	-	-	243.60	0.00	5 6 10 15	371-0406-3410
- / 500	502.40	-	-	300.00	1.82	5 6 10	371-0500-3410
20 / 508	510.40	-	-	304.80	0.00	5 6 10	371-0508-3410
- / 600	602.40	-	-	360.00	3.80	5 6 10	371-0600-3410

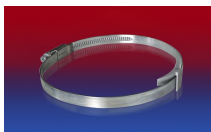
## Accessories



CONNECT 228



CLAMP 208



CLAMP 210 BRIDGE CLAMP



CONNECT 270-271