

Food hose and pharmaceutical hose, light

Application

- flexible hose/ ducting for gases and for abrasive dust, powder, fibres
- food industry, pharmaceutical industry: foodstuff, pharmaceutical
- conveying of dry foods e.g. rice, cereals, sugar, milk powder, powders, coffee, tea, grains, flour, frozen foods
- mixer, dryer, packaging machine, bulk-bag (big bag)-charging and discharging, mill
- extraction arm
- clean room ventilation, semiconductor production machine
- medical equipment/ medical technology, healthcare sector: cable protection conduit, air supply hose, extraction hose

Properties

- lightweight and reinforced
- highly flexible + compressible 3:1

- abrasion-resistant
- Approved by an independent testing laboratory for the complete hose acc. to EU-Directive 10/2011 and EC 1935/2004 and the latest EU-Directive 2015/174, food grade polyurethane, complies with: FDA 21 CFR 177.2600 and 178.2010
- Approval acc. to EU-Directive 10/2011 (food simulants A, B, C or E and D2) and EC 1935/2004
- odourless and tasteless
- microbe and hydrolysis resistant
- good resistance to oil, gasoline and chemicals
- very good low temperature flexibility
- manufacturing process acc. GMP EC 2023/2006
- conforms to RoHS guideline
- REACH according to --> Technology / Technical Information / REACH

Temperature Range

- 40 °C to 90 °C
- short time to 125 °C

Design

- patented PROTAPE® tape hose
- spring steel wire integrated in wall
- wall: special premium ether-polyurethane (Pre-PUR®)
- wall thickness 0,6 mm approx.

Delivery variants

- further diameters and lengths available on request
- customer-specific branding
- transparent (standard)

I.D. (in / mm)	outer Ø (mm)	Pressure DIN 26057 (50% Elongation) (bar)	Vacuum DIN 26057 (axially fixed) (bar)	Bending Radius (mm)	Weight (kg/m)	Dimensions in Stock (m)	Order No.
1 / 25	32.00	1,605 (4,18)	0,540 (1,00)	20.00	0.15	5 10 15	330-0025-0000
- / 30	37.00	1,350 (3,50)	0,450 (1,00)	22.00	0.18	5 10 15	330-0030-0000
1,25 / 32	39.00	1,265 (3,29)	0,420 (1,00)	23.00	0.19	5 10 15	330-0032-0000
1,5 / 38	45.00	1,075 (2,78)	0,355 (0,77)	26.00	0.22	5 10 15	330-0038-0000
- / 40	47.00	1,020 (2,64)	0,335 (0,69)	27.00	0.23	5 10 15	330-0040-0000
1,75 / 44-45	52.00	0,910 (2,35)	0,300 (0,55)	30.00	0.26	10 15	330-0045-0000
2 / 50-51	58.00	0,820 (2,12)	0,220 (0,87)	33.00	0.37	5 10 15	330-0050-0000
2,36 / 60	68.00	0,685 (1,77)	0,180 (0,61)	38.00	0.43	5 10 15	330-0060-0000
2,5 / 63-65	73.00	0,635 (1,64)	0,165 (0,52)	41.00	0.46	5 10 15	330-0065-0000
- / 70	78.00	0,590 (1,52)	0,155 (0,45)	43.00	0.50	5 10 15	330-0070-0000
3 / 75-76	83.00	0,550 (1,42)	0,145 (0,40)	46.00	0.53	5 10 15	330-0075-0000
- / 80	88.00	0,515 (1,33)	0,135 (0,35)	48.00	0.57	5 10 15	330-0080-0000
3,5 / 89-90	98.00	0,460 (1,19)	0,120 (0,28)	53.00	0.63	5 10 15	330-0090-0000
4 / 100-102	108.00	0,415 (1,07)	0,080 (0,31)	58.00	0.67	5 10 15	330-0100-0000
- / 110	118.00	0,375 (0,97)	0,070 (0,26)	63.00	0.73	5 10 15	330-0110-0000
4,5 / 114-115	123.00	0,360 (0,93)	0,070 (0,24)	66.00	0.76	5 10 15	330-0115-0000
4,72 / 120	128.00	0,345 (0,89)	0,065 (0,22)	68.00	0.79	5 10 15	330-0120-0000
5 / 125-127	133.00	0,335 (0,86)	0,065 (0,20)	71.00	0.83	5 10 15	330-0125-0000
- / 130	138.00	0,320 (0,82)	0,060 (0,19)	73.00	0.85	5 10 15	330-0130-0000
5,5 / 140	148.00	0,295 (0,76)	0,055 (0,16)	78.00	0.92	5 10 15	330-0140-0000

I.D. (in / mm)	outer Ø (mm)	Pressure DIN 26057 (50% Elongation) (bar)	Vacuum DIN 26057 (axially fixed) (bar)	Bending Radius (mm)	Weight (kg/m)	Dimensions in Stock (m)	Order No.
6 / 150-152	158.00	0,275 (0,71)	0,055 (0,14)	83.00	0.99	5 10 15	330-0150-0000
6,3 / 160	168.00	0,260 (0,67)	0,050 (0,12)	88.00	1.04	5 10 15	330-0160-0000
- / 170	178.00	0,245 (0,63)	0,045 (0,11)	93.00	1.11	5 10 15	330-0170-0000
- / 175	183.00	0,240 (0,61)	0,045 (0,10)	96.00	1.14	5 10 15	330-0175-0000
7 / 178-180	188.00	0,230 (0,59)	0,045 (0,10)	98.00	1.17	5 10 15	330-0180-0000
8 / 200-203	208.00	0,210 (0,54)	0,030 (0,11)	108.00	1.33	5 10	330-0200-0000
- / 225	233.00	0,185 (0,48)	0,025 (0,09)	121.00	1.47	5 10 15	330-0225-0000
- / 250	258.00	0,165 (0,43)	0,025 (0,07)	133.00	1.63	5 10	330-0250-0000
10 / 254	262.00	0,165 (0,42)	0,025 (0,06)	135.00	1.66	5 10	330-0254-0000
11 / 280	288.00	0,150 (0,38)	0,020 (0,05)	148.00	1.82	5 10	330-0280-0000
- / 300	309.00	0,140 (0,36)	0,020 (0,05)	159.00	2.13	5 10	330-0300-0000
- / 315	324.00	0,135 (0,34)	0,020 (0,05)	167.00	2.23	5 10	330-0315-0000
- / 325	334.00	0,130 (0,33)	0,020 (0,04)	172.00	2.30	5 10	330-0325-0000
- / 350	359.00	0,120 (0,31)	0,020 (0,04)	184.00	2.48	5 10	330-0350-0000
- / 400	409.00	0,105 (0,27)	0,015 (0,02)	209.00	2.83	5 10	330-0400-0000
- / 450	459.00	0,095 (0,24)	0,015 (0,02)	234.00	3.18	5 10	330-0450-0000
- / 500	510.00	0,085 (0,21)	0,015 (0,02)	260.00	4.38	5 10	330-0500-0000

Accessories



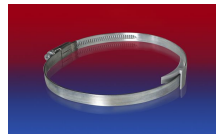
CLAMP 217



CONNECT 223



CONNECT 228



CLAMP 210 BRIDGE
CLAMP



CLAMP 213



CLAMP 212



CONNECT 270-271